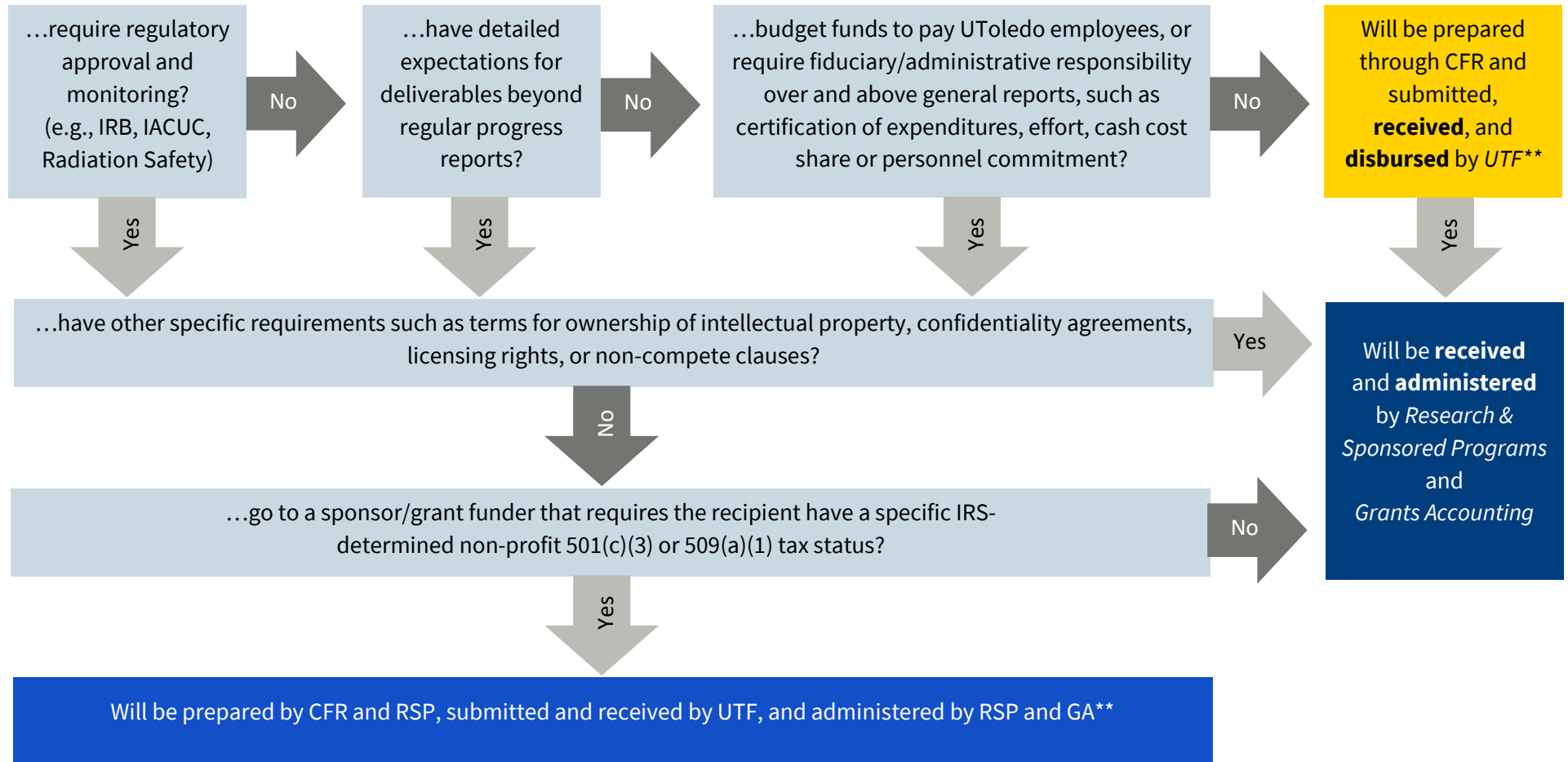


# Research & Sponsored Programs (RSP) vs Corporate and Foundation Relations (CFR)

How do I know if my proposal for external funding goes through Research & Sponsored Programs (RSP) or Corporate and Foundation Relations (CFR)?

Will the award be processed through RSP-Grants Accounting (GA), the UT Foundation, Or Both? \*

Does the proposal or project...



\*The above may not cover all scenarios, ask RSP or CFR for additional clarification.

\*\*The budget portion of proposals submitted by RSP should be prepared by that office, with those submitted by UTF prepared by RSP in consultation with CFR.

APPLICABLE UTOLEDO POLICY as of May 2009: Policy No. 3364-70-23